

GSW2 EXIO ANPR

***(Automatic Number Plate
Recognition)***

Version: ANPR Camera Settings_2504_2019_2

Content

1	INTRODUCTION	3
2	ANPR CAMERA CONNECTION ON THE GSW2 EXIO	4
2.1	POWER SUPPLY TO THE GSW2 EXIO	4
2.2	POWER SUPPLY TO THE ANPR CAMERA.....	4
3	WIEGAND CONNECTION	5
3.1	GSW2 EXIO WIEGAND INPUT	5
3.2	ANPR CAMERA WIEGAND OUTPUT	5
4	ANPR CAMERA SETTINGS	6
4.1	ANPR CAMERA IP ADDRESS	6
4.2	ANPR CAMERA DEFAULT USER AN PASSWORD.....	7
4.3	ANPR CAMERA READIN AREA SETTING.....	7
5	LICENSE PLATE NUMBER	8
5.1	PROGRAMMING THE LICENSE PLATE NO.....	8
6	CONTACT DETAILS	9

1 INTRODUCTION

With this document, we'd like to provide a detail description of the Hivision ANPR camera to the GSW2 Exio controller. We are using the DS-2CDA26FWD-IZSWG/P camera but note that this camera has special custom Firmware so the standard camera is not compatible with our controller.

Our system makes it possible to use the camera on the same way as RFID reader/Keypad and it is connected to the GSW2 Exio Controller over the Wiegand Input, therefore the LAN connection and expensive computers with Software are not necessary.

2 ANPR CAMERA CONNECTION ON THE GSW2 EXIO

We need to connect the 15V DC power supply from the AC/DC converter and Wiegand connection. Connect the ANPR camera and the GSW2 Exio from the same Power Supply unit.

2.1 POWER SUPPLY TO THE GSW2 EXIO

Connect the +15V and GND from the Power Supply to the GSW2 Exio terminals »POWER SUPPLY«. (Figure 1)



Figure 1

2.2 POWER SUPPLY TO THE ANPR CAMERA

Connect the +15V DC and GND from the same power source (Figure 1) to the Power camera terminals (Figure 2).



Figure 2

3 WIEGAND CONNECTION

The GSW2 Exio and ANPR camera are connected via Wiegand Input/Output and for this connection only 3 wires are required.

3.1 GSW2 EXIO WIEGAND INPUT

Connect the Wiegand cable with 6 pins connector to the GSW2 Exio Wiegand Input (Figure 3).



Figure 3

3.2 ANPR CAMERA WIEGAND OUTPUT

Connect D0, D1, and GND from the GSW2 Exio Wiegand Input to the ANPR camera Wiegand Output (Figure 4).

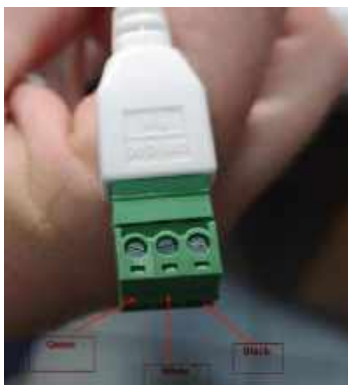


Figure 4

4 ANPR CAMERA SETTINGS

The ANPR camera is pre-set already in our company. During the installation, we need to set the License Plate reading area only. For this operation the camera must be connected on the PC LAN connector over the LAN **cross cable** or via a LAN **switch**.

After the reading area setting, we can remove the LAN cable connection and it is not necessary for the ANPR camera normal operation.

4.1 ANPR CAMERA IP ADDRESS

To get the current ANPR camera IP address we have to run the SADP Tool program which you can get here:

<https://www.hikvision.com/en/Support/Downloads/Tools>

After the SADP Tool running, you will find the camera IP address here (Figure 5):



Figure 5

4.2 ANPR CAMERA DEFAULT USER AN PASSWORD

To enter into the camera settings please use the following default settings:

USER NAME: admin

PASSWORD: mars1234

4.3 ANPR CAMERA READIN AREA SETTING

Open the Internet Explorer browser and type the IP address founded by SADP Tool (Figure 5).

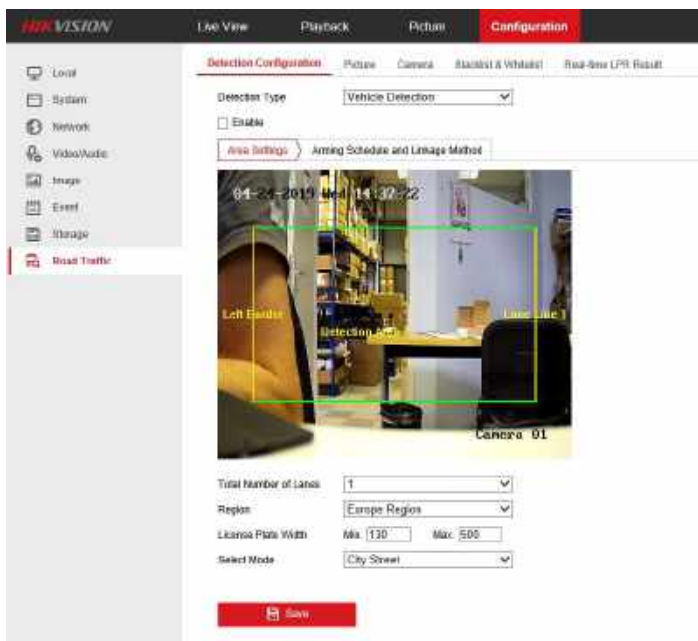


Figure 5

For detail settings please check the Hikvision ANPR camera manual.

5 License PLATE NUMBER

To program the Licence Plate Numbers go to the following link and make a registration. The details registration and programming procedure please read the GSW2 Exio manual.

EASY SET:

www.easysset.eu

5.1 PROGRAMMING THE LICENSE PLATE NO.

Open Tab Video Pin Access and write the license plate number into the PIN field (Figure 6):

The screenshot shows the EasySet web interface. The top section displays device information: Name (S-VIPR_OS1WZEL), Type (GSM2 2102), IMEI (807043080218121), Phone number (430830311821), Location (HR), and App (AT10). The 'Device reported values' section shows Firmware (1.4.0 OTA V 2018-10-02), Signal (-41.81dBm), Network ID (26240), Uptime (0 days 1 hour), and Last update (24.10.2018 10:44:33).

The bottom section is titled 'Admin settings' and contains a navigation menu with tabs: Version, Pin access, Call log, Outputs, Digital interface, External modules, Inputs, Temporary pin access, Video pin access, Administration, Misc, and Temporary. The 'Video pin access' tab is selected and highlighted with a red box and an arrow pointing to it with the text 'Open Video pin access Tab'.

Below the navigation menu is a table with the following columns: Position, PIN, User name, Outputs, Notify, Counter limit, and Timer limit. The table contains several rows of configuration data. A red box highlights the 'PIN' column for the first row (VP01) with the text 'Write the License No. here'.

Position	PIN	User name	Outputs	Notify	Counter limit	Timer limit
VP01	CEL103T10	Alex 103T	Configure	<input type="checkbox"/>	<input type="checkbox"/>	<input type="checkbox"/>
VP02	LIT203V80	Alex 87	Configure	<input type="checkbox"/>	<input type="checkbox"/>	<input type="checkbox"/>
VP03	CEL103T10	Alex 103T	Configure	<input type="checkbox"/>	<input type="checkbox"/>	<input type="checkbox"/>
VP04	CEL103T10	Alex 103T	Configure	<input type="checkbox"/>	<input type="checkbox"/>	<input type="checkbox"/>
VP05	OWF05ACF	Alex	Configure	<input type="checkbox"/>	<input type="checkbox"/>	<input type="checkbox"/>
VP06	HUK20V70	Alex 105	Configure	<input type="checkbox"/>	<input type="checkbox"/>	<input type="checkbox"/>
VP07	Configure	<input type="checkbox"/>	<input type="checkbox"/>	<input type="checkbox"/>

Figure 6

6 CONTACT DETAILS

MARS COMMERCE d.o.o.

MIRKA VADNOVA 19
4000 KRANJ
SLOVENIA

TEL: + 386 4 280 74 00

E-MAIL: info@mars-commerce.si

WEB SITE: www.mars-commerce.com

SALES:

E-MAIL: sales@mars-commerce.com

TEL: +386 4 280 74 06